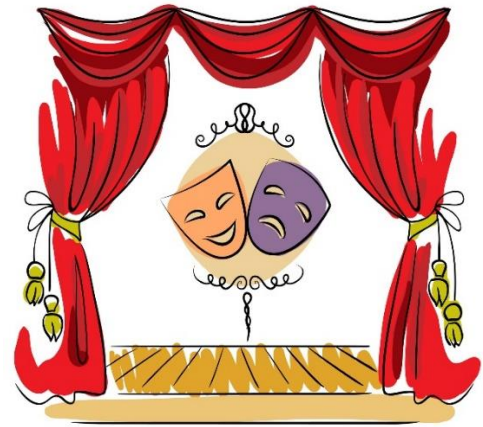


## DRAMA

### Introduction

As well as being enjoyable, drama develops important life skills: communication, collaboration and creativity, as well as initiative, empathy, adaptability and persuasiveness. These skills are essential to succeed in any career and are highly sought-after by employers. The course gives you the opportunity to develop practical skills while enhancing your appreciation and understanding of drama and the theatre. It also establishes a solid foundation for further study at a more advanced level.



### What will it be like?

Students can choose to study and develop their preferred discipline, **either PERFORMANCE (acting) or DESIGN (costume or set design)** so if you love being creative but you don't fancy acting for an audience, this course could still be for you!

60% of the course is practical; you will be devising scripts, editing and performing existing plays, creating costumes or deciding on lighting and sound effects. If you enjoy creative tasks and working with others, you will really enjoy G.C.S.E Drama.

### Assessment

The course is divided into three main components:

#### Component 1: Devised Performance

Controlled assessment – a performance or a design presentation and a student log (25%)

#### Component 2: Scripted Performance

Controlled assessment – a performance or a design presentation of an existing play (35%)

#### Component 3: Knowledge and Understanding of Drama

External written examination – 1 hour 30 minutes, three questions based on one set play text (40%)  
(This exam may only be taken in Year 12)

### Career Progression

Drama can lead to many exciting and unexpected career opportunities, including:

- Television and Media
- The Theatre
- Video Gaming
- Marketing & Publicity
- Writing and Journalism
- Teaching
- Drama Therapy
- Sales
- Psychology

**Don't let what's going on with Covid put you off a career in the arts. Those in the creative industry are still working away and live theatre is slowly returning. What did lots of us do during lockdown? WATCHTV/THEATRE! Be part of it-choose Drama!**