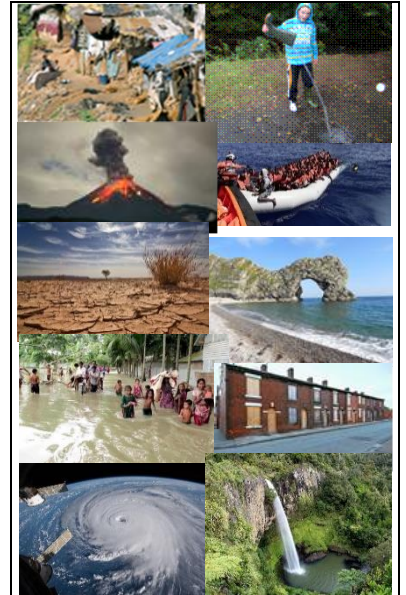


GEOGRAPHY

Introduction

Turn on your TV, listen to the radio, or surf the internet almost any day and you will see and listen to coverage of events and issues that are at the very heart of Geography. Events such as flooding, storms and earthquakes or issues concerning climate change, fair trade and immigration are all fundamentally geographical. Geography tackles these big issues!

Through studying Geography, you will develop a knowledge and understanding of our changing world and learn to take a critical and reflective approach to the world around you. You will also be challenged to research and investigate local and global topical issues through data collection in the field and from multimedia sources. Ultimately, you will develop a knowledge and understanding of your personal responsibilities for contributing towards a sustainable future in our society and on our planet.



What will it be like?

The course is divided up into three units.

Unit 1 – Understanding Our Natural World

- Theme A – River Environments
- Theme B – Coastal Environments
- Theme C – Our Changing Weather and Climate
- Theme D – The Restless Earth

Unit 2 – Living in Our World

- Theme A – Population and Migration
- Theme B – Changing Urban Areas
- Theme C – Contrasts in World Development
- Theme C – Managing Our Environment

Unit 3 – Fieldwork

The Geography department conduct a river study in October of Y11 to investigate how a river changes as it travels from its source in the mountains to its mouth in the sea. This will involve putting on wellies and waders and if you're unlucky getting a little or a lot wet! You will be assessed on your ability to plan a geography enquiry, collect data and then describe and explain what you have found out.

Assessment

Units 1 and 2 above are assessed through two written examinations. Unit 1 is worth 40% of your overall grade, lasts 1h 30mins and is completed in June of Year 11. Unit 2 is also worth 40% of your overall grade, also lasts 1h 30mins but is completed in June of Year 12. You will have an opportunity to retake Unit 1 in June of Year 12 if you need to.

Unit 3 is worth 20% of your overall GCSE grade and is assessed by a 1h examination in June of Y12.

There is no CAT/Coursework in GCSE Geography.

Career Progression

Geography can lead to many related university courses but it is also held in high regard by many employers due to the vast range of knowledge and skills a geographer will develop through a GCSE course. Skills such as communication, decision making, enquiry, problem-solving, research, data collection and working in teams are just a few as well as the essential geographical knowledge and understanding developed. GCSE geographers have gone on to become entrepreneurs, engineers, town planners, teachers, aid workers, social workers, travel agents, sports and leisure managers, environmental consultants, farmers, exploration geophysicists, administrators, meteorologists, weather presenters, surveyors, aid workers, tour guides, social workers, conservationists, forestry workers, charity coordinators, media researchers and journalists to name just a few! People with Geography degrees are also among the most likely graduates to be in full-time employment.